

# Lesson Printables

Be a rockstar and only print what you need!



**Lesson Information Sheet: 2**

**Sunlight Zone**  
Activity: 3

**Twilight Zone**  
Activity: 4

**Midnight Zone**  
Activity: 5

**Extras**  
Fraction Mat: 6  
Optional Recording Log: 7  
(Could be used when looking for fractions around your local area)  
Answers: 8-9

# Let's identify fractions

## Why learn this?

Fractions are parts of a whole. By exploring fractions around them, students develop real-life contexts for these types of numbers rather than just seeing abstract symbols on a page. When children notice fractions in everyday situations, they develop a deeper conceptual understanding of what fractions actually represent.

## What are fractions?

### What are fractions?

- A fraction represents a part of a whole. For example, a whole pizza that has been cut into 8 equal parts.
  - The numerator is the top number and represents the number of parts or pieces being focused on.
  - The denominator is the bottom number and represents the number of pieces or parts in the whole.
- \*Note, fractions can be mixed numbers, which are whole numbers and fractions. They will be discussed in future lessons.*

### How can I find fractions in pictures?

- Identify the total amount of parts in the whole.
  - In this example, there are 6 dots in total.
  - This amount will be the denominator of all fractions associated with the picture as it represents the total amount of dots.
- Choose something to focus on.
  - In the dot picture, we could focus on the orange dots.
  - There are 2 orange dots, this means that the numerator will be 2.
- Record the fraction.
  - $\frac{2}{6}$  of the dots are orange.
- Each picture shows several fractions.
  - $\frac{1}{6}$  of the dots are green,  $\frac{2}{6}$  of the dots are blue,  $\frac{6}{6}$  of the dots are dots, etc.



### How can my students find fractions at home?

- Gather a collection of items.
  - This could be a pile of socks, a handful of lego blocks, a group of different beans, balls, colored pencils, fruit etc.
- Use the above steps to find fractions for each group or collection of items.
  - 3 of the 5 socks are white
    - ◆ The fraction is  $\frac{3}{5}$ .
  - 1 of the 5 socks has a hole in it, so  $\frac{1}{5}$  of the socks are holey.

## Let's warm up!

### Starter Activity - What a Hoot

Students are shown several owls with numbers and a target with the number 24. How many different ways can students make the target number using the owl numbers and adding, subtracting, multiplying or dividing?

#### To support, students could:

- Be asked guiding questions:
  - What numbers could be added together to get near 24? Is there another number you could add or subtract that would get you exactly 24?
  - What numbers could be multiplied to get near 24? If you add or subtract another number could you get 24?

#### To challenge, students could:

- Find at least 5 different ways to make 24.
- Try to include all four operations.

## Let's do this!

**Main Activity** - Students are shown 4 different pictures. What fractions can students find in each of the pictures? Encourage students to identify at least 2 fractions for each picture.

#### To support, students could:

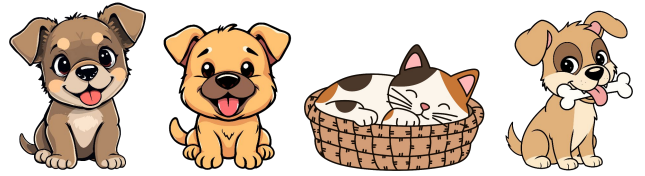
- Use a fraction mat for guidance. See printables.

#### To challenge, students could:

- Explore trying to draw their fractions as a visual. See slide 12 for one possible example. Students should try to make equal parts in their visuals. For example, if the whole is a group of 4 fish, the visual should have 4 equal parts (these can be estimated, so do not need to be perfect).
- Go exploring! What fractions can students find?
  - Look for fractions in a pile of clothes. What fraction of the clothes are shorts? Shirts? Clean?
  - Flip over a handful of playing cards. What fraction are hearts? Spades? Odd numbers?
  - Look at a collection of mugs/cups. What fraction are blue? Chipped? Have a pattern or words?
  - Look at a collection of shoes. What fractions are sneakers? Have laces? Are left shoes?

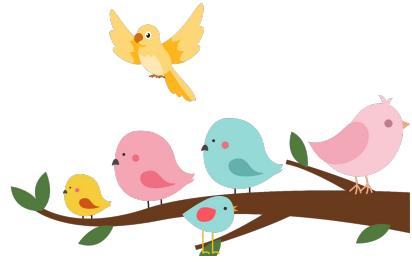
# Sunlight Zone

1. What fractions can you find in the pictures?  
→ Identify at least 2 fractions per picture.



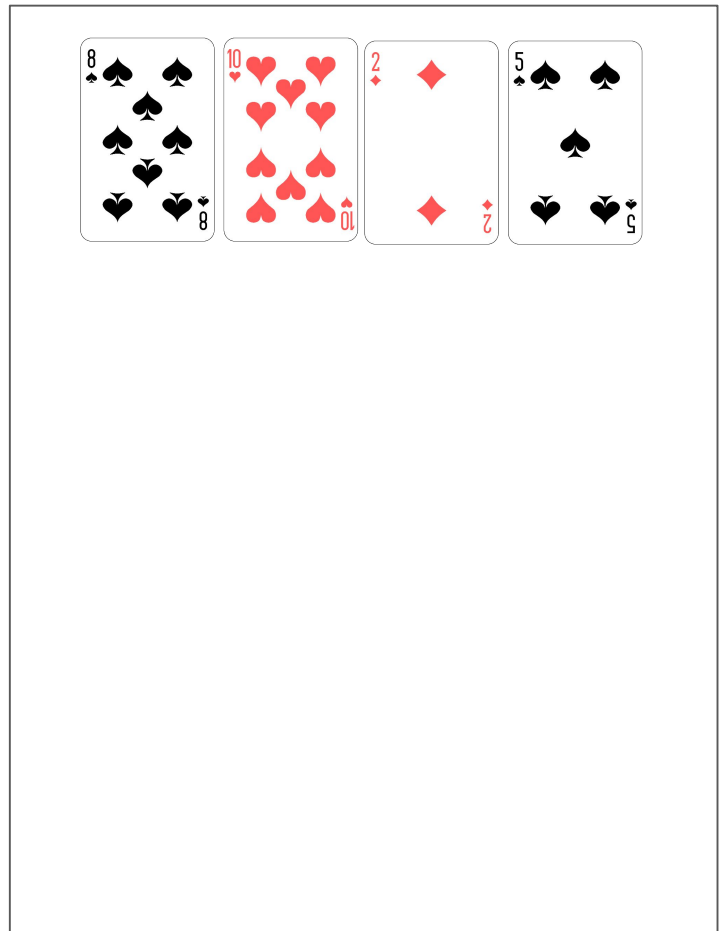
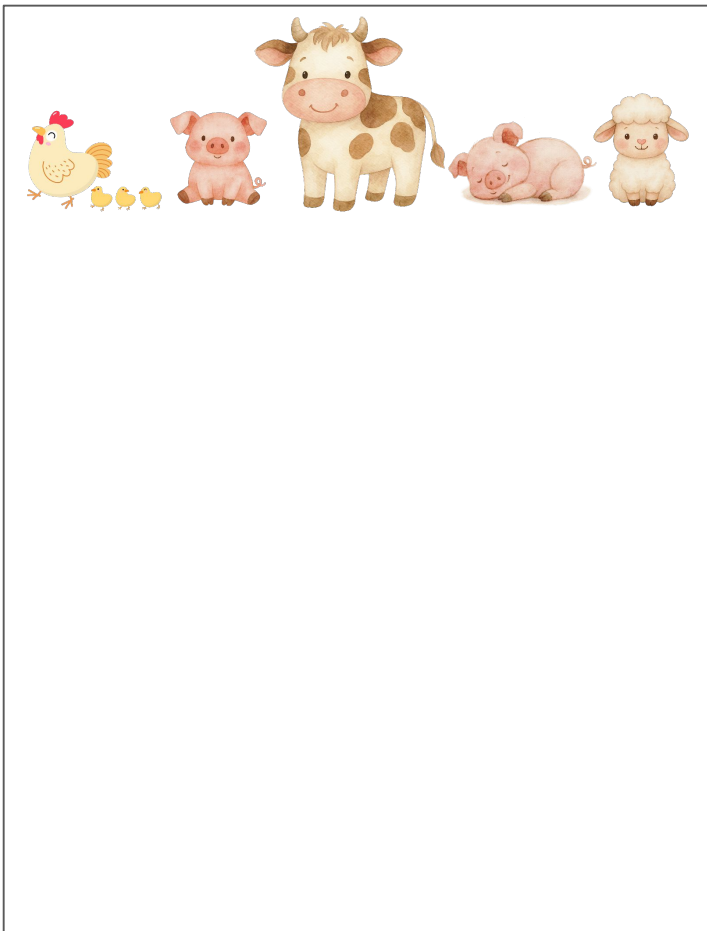
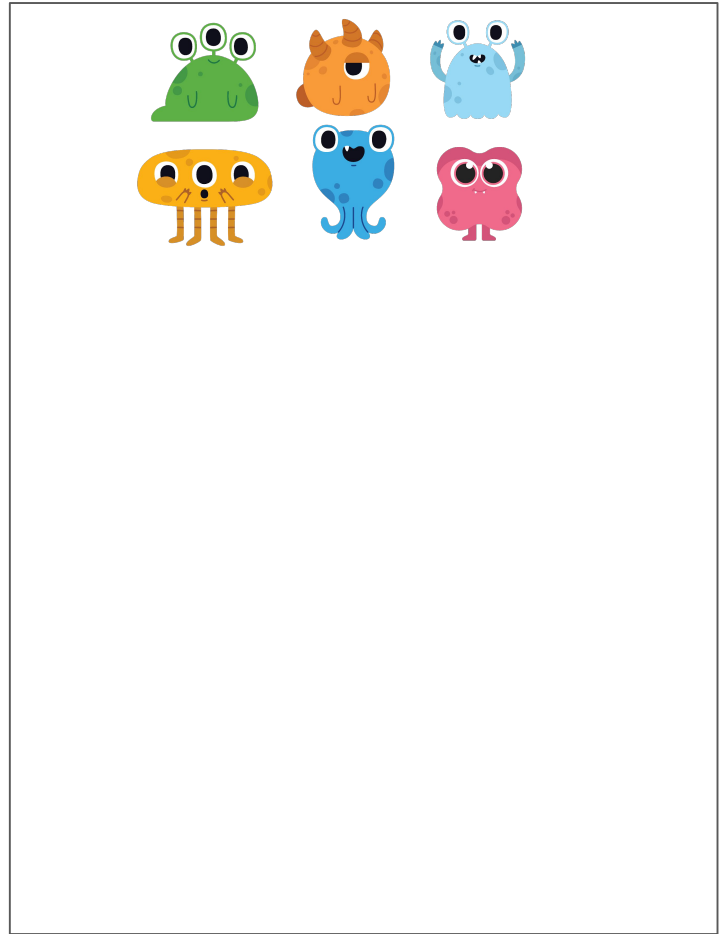
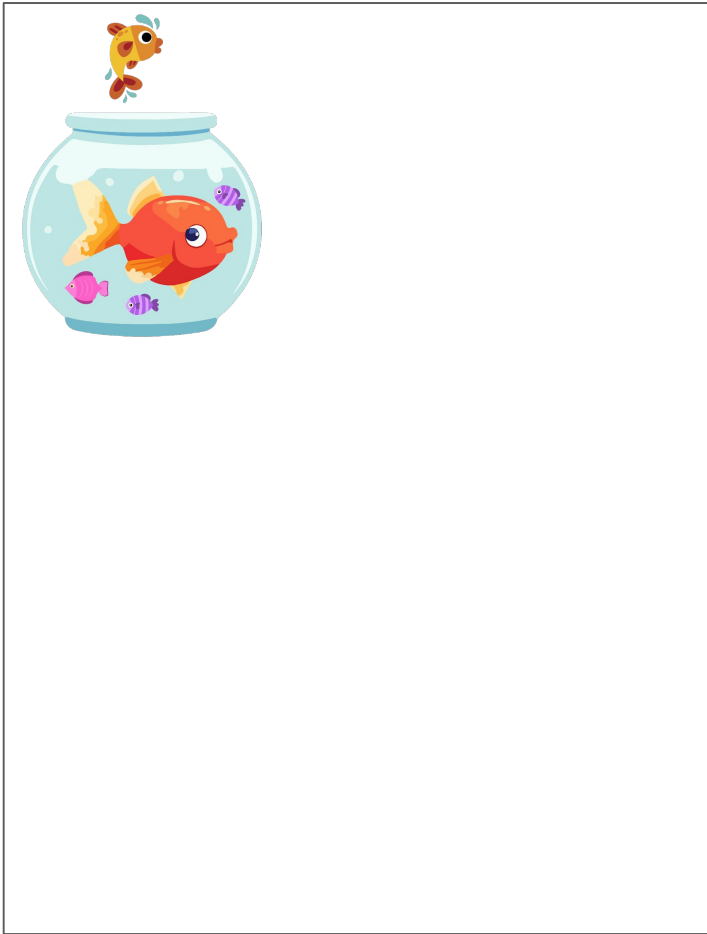
# Twilight Zone

1. What fractions can you find in the pictures?  
→ Identify at least 2 fractions per picture.



# Midnight Zone

1. What fractions can you find in the pictures?  
→ Identify at least 3 fractions per picture.

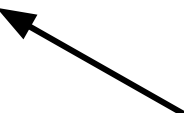


# Fraction Mat

I'm investigating:

**Numerator**

(Number of parts or pieces you are focusing on)

A large, empty rectangular box with a pink border, intended for writing the numerator of a fraction.A large, empty rectangular box with a teal border, intended for writing the denominator of a fraction.

**Denominator**

(Number of parts or pieces in the whole)

# Optional Recording Log

I'm investigating:

Fractions I've found:

I'm investigating:

Fractions I've found:

I'm investigating:

Fractions I've found:

I'm investigating:

Fractions I've found:

# Answers

Below are possible solutions, not all solutions.

Sunlight Answers	
Leaves	$\frac{2}{4}$ are green $\frac{1}{4}$ is red $\frac{1}{4}$ is orange/yellow
Dogs/Cat	$\frac{3}{4}$ are dogs $\frac{1}{4}$ is a cat $\frac{1}{4}$ are sleeping $\frac{4}{4}$ are pets
Balloons	$\frac{1}{10}$ is green $\frac{3}{10}$ are red $\frac{4}{10}$ are blue $\frac{10}{10}$ are balloons
Wool	$\frac{4}{8}$ or $\frac{1}{2}$ are blue $\frac{2}{8}$ or $\frac{1}{4}$ are yellow $\frac{7}{8}$ are not red $\frac{6}{8}$ are inside the basket

Twilight Answers	
Wool	$\frac{4}{8}$ or $\frac{1}{2}$ are blue $\frac{2}{8}$ or $\frac{1}{4}$ are yellow $\frac{7}{8}$ are not red $\frac{6}{8}$ are inside the basket
Birds	$\frac{2}{6}$ are blue $\frac{1}{6}$ is flying $\frac{4}{6}$ are facing left
Balloons	$\frac{1}{10}$ is green $\frac{3}{10}$ are red $\frac{4}{10}$ are blue $\frac{10}{10}$ are balloons
Fish	$\frac{1}{5}$ is out of the water $\frac{2}{5}$ are purple $\frac{4}{5}$ are swimming $\frac{5}{5}$ are fish

# Answers

Below are possible solutions, not all solutions.

Midnight Answers	
Fish	1/5 is out of the water 2/5 are purple 4/5 are swimming 5/5 are fish
Monsters	1/6 is green 3/6 have 2 eyes 2/6 have 3 eyes 1/6 has 1 eye
Farm Animals	4/8 are chickens 1/8 is sleeping 4/8 have 4 legs 8/8 are animals
Playing Cards	1/2 or 2/4 are black 1/4 are hearts 3/4 are even numbers 4/4 cards